



Croatia  
Court  
EDMONDSON PARK

## Tasman Terrace

**The Tasman** design is perfectly suited for a first home buyer or investor looking for a great home.

This 4-bedroom home contains everything you will need from a main bedroom with ensuite and WIR, to the open plan kitchen and dining area. If you're looking for a beautiful family home, in an ideal location, then this is the perfect investment.

**Edmondson Park** is one of Sydney's fast growing suburbs, it's a brand new town with a village feel. Edmondson Park has its own train station, 150 hectares of parklands and a wide range of living options for every stage of life.

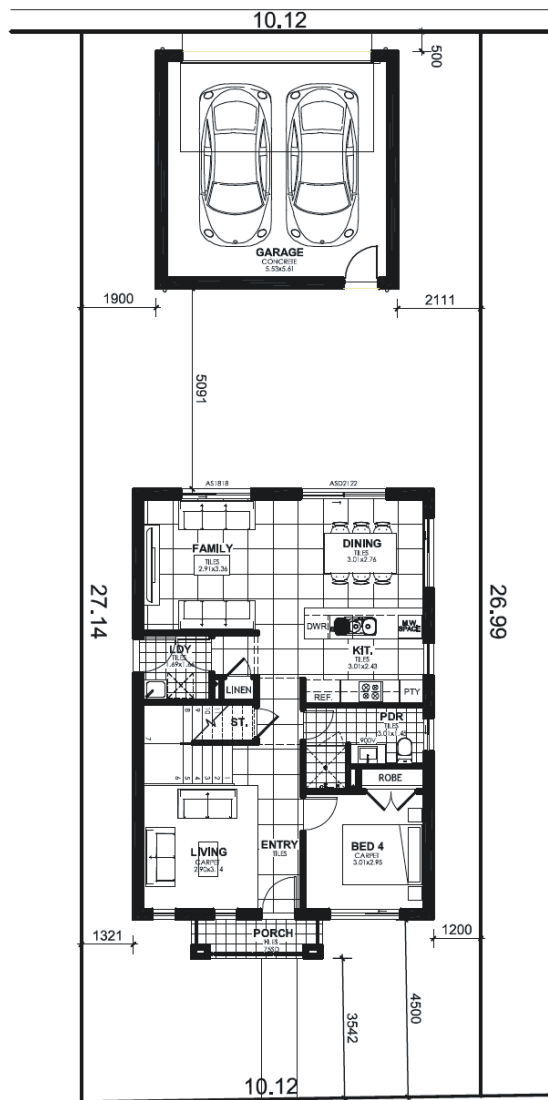
### Tasman Terrace

Lot Number:	103
Land Size:	273.9m <sup>2</sup>
House Design:	Tasman Terrace
House Area:	172.46m <sup>2</sup>
Facade:	Classic
Width:	7.6m
Depth:	11.9m
Inclusions:	Opulence
Upgrades:	Croatia

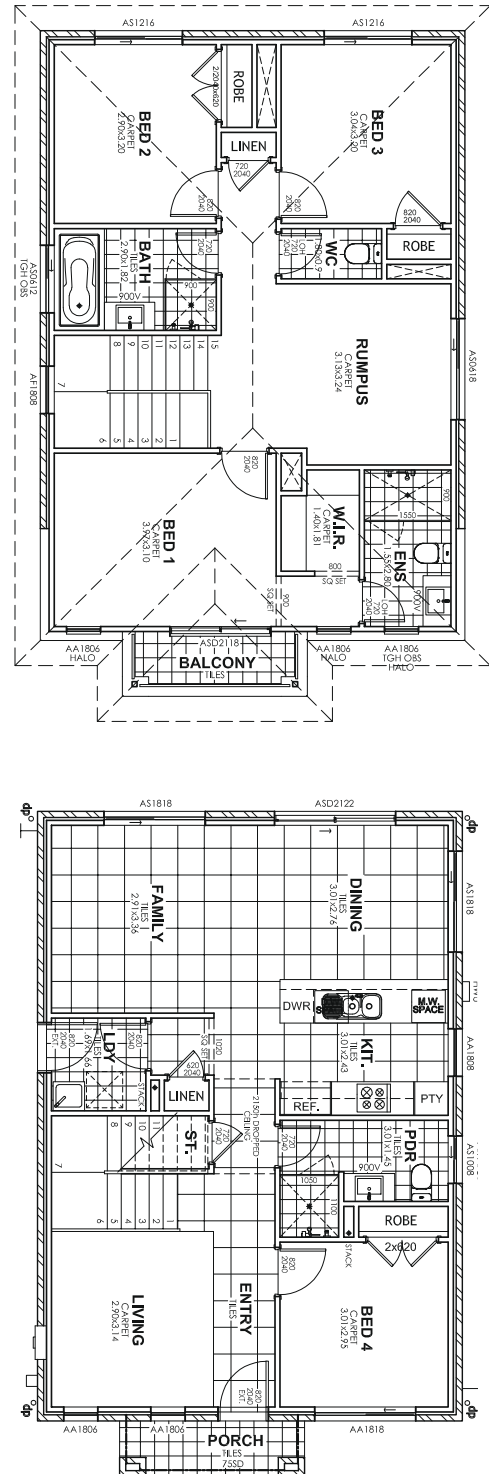
 4  2.5  2

Images are shown for illustrative purposes and may not always represent the final product. ZAC Homes has the right to alter prices and inclusions without prior notice. Based on 500mm cut and fill, no allowance for BAL or DEB. All designs are copyright to ZAC Homes Pty Ltd. Builders License No. 47259C. Date issued: 03.06.19

## COSTELLO LANE



## CROATIA AVENUE



Images are shown for illustrative purposes and may not always represent the final product. ZAC Homes has the right to alter prices and inclusions without prior notice. Based on 500mm cut and fill, no allowance for BAL or DEB. All designs are copyright to ZAC Homes Pty Ltd. Builders License No. 47259C. Date issued: 03.06.19